







De residuo a recurso
con gestión segura

 THE ASSOCIATION	3
 AREA	13
 MEMBERS	14
 CONTACT	15

ASEGRE

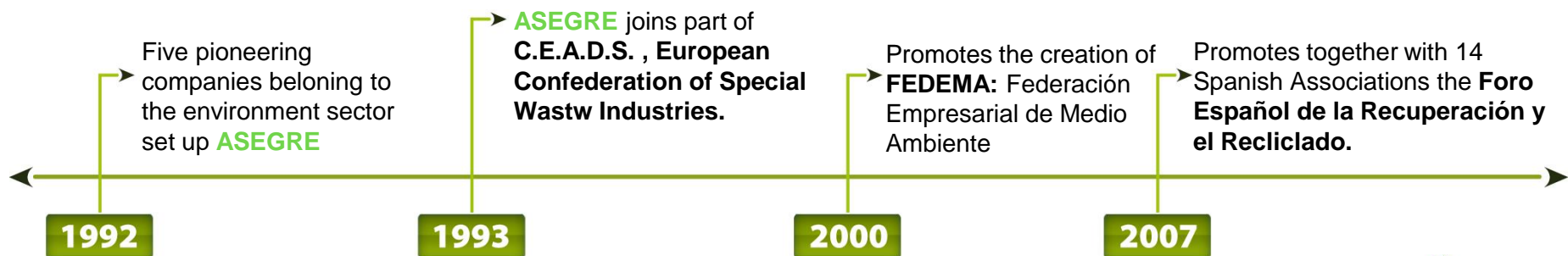
Is the Spanish Association of Hazardous Waste Managers and is composed of 80 companies of this area.

ASEGRE is represented in practically the total of the Communities in Spain and employs directly 3.000 persons, being 25% graduated.



- **ASEGRE** was founded in 1992 with the proposal to co-ordinate, defend, advise and represent the interests of it's members, as an open discussion in order to defend the environment.

Since then spanish companies join the area of hazardous waste management which are approved by each community to carry out those activities and further on have shown their commitment regarding the quality and environment management which is established in their companies



en 2009 **ASEGRE** ingresa en FEAD



- Presently, **ASEGRE** has around 80 members all over Spain. 65% of the companies belonging to **ASEGRE** are from Andalusia, Catalonia, Madrid and Bask Country.

The association also manages each type of hazardous waste: from those proceeding from hospitals to those generated by a garage.

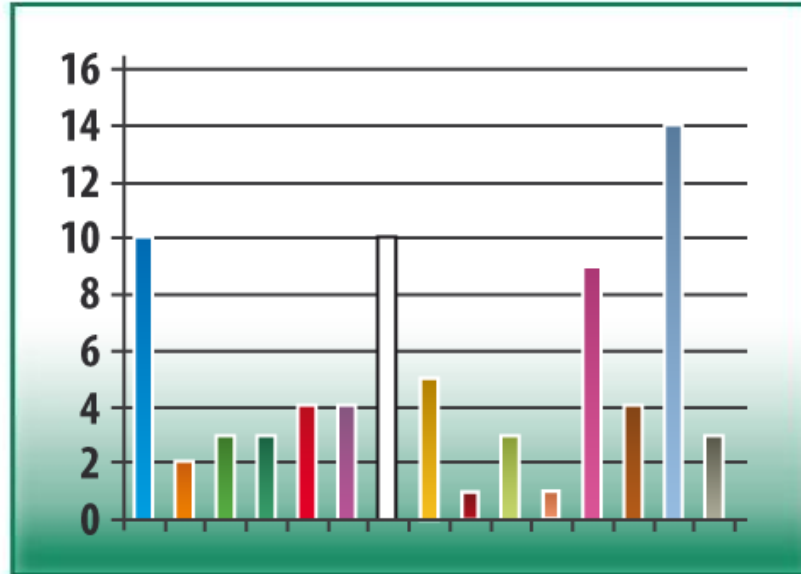
The structure of the associaton allows a perfect adaptability to a wide range of situations and has:

- » 11 territorial groups which analise and deal with the problem of each community
- » 12 sectorial groups to deal with the issues of each type of waste and treatment.





REFERENCES

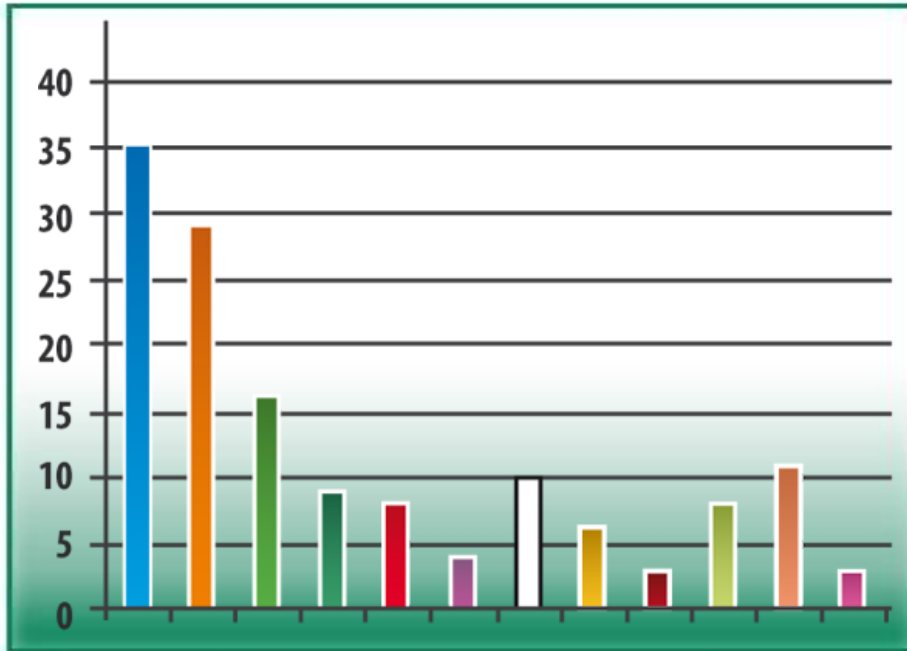


- Andalucía
- Aragón
- Asturias
- Cantabria
- Castilla La Mancha
- Castilla y León
- Cataluña
- Comunidad Valenciana
- Extremadura
- Galicia
- Rioja
- Madrid
- Murcia
- País Vasco
- Navarra





REFERENCES



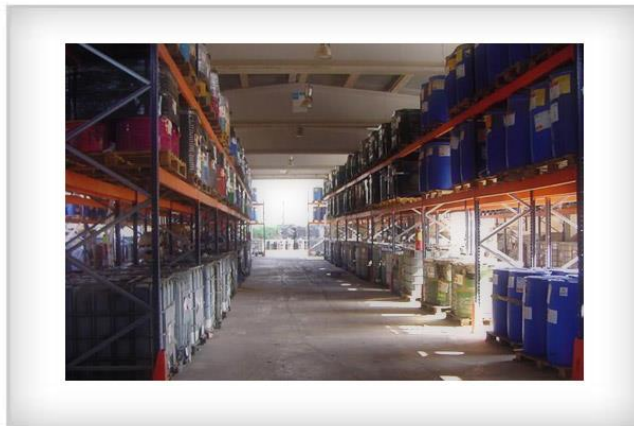
- Committe on Pretreatment Facilities
- Committe on Physico/Chemical Treatment. Biological Stabilization
- Committe on Waste Oils
- Committe on PCBs
- Committe on Metals Recovery
- Committe on Solvent Recovery
- Committe on Energy Recovery and Incineration
- Committe on Landfills
- Committe on Health Care Wastes
- Committe on Marpol
- Committe on Contaminated Soils
- Committe on Waste packaging





MISSION

- » Act as the main interlocutor regarding all issues related with special waste and soils contaminated as well as general environment.
- » Promote the best technologies available in order to recover those resources contained in the waste and reduce the impact of our installations.



- » Collaboration with the civil services and our members to improve all practices which from a technical, social, financial and environmental point of view, will contribute to an sustainable development.



● AIMS

- » **Co-ordinate, defend and represent** the members
- » **Promote** training of specialists for waste management. Soil decontamination and environment protection
- » **Direct** the waste management to achieve a minimum environmental impact.
- » **Boost** those technologies which lead to a more efficient and clean recover of the material or energetic resources of the waste or even their elimination.
- » **Collaboration** with civil services
- » **Contribute** to succeed in managing a financial and social development model of preserving the environment.
- » **Promote** the identification of the waste management sector as specialized with high know-how level and commitment in order to solve the waste problem and convert them into again usable resources



● ACTIVITIES

- » Organisation of events to allow an exchange of experiences and knowledge regarding waste management issues
- » Waste Management Training for producers
- » Implementation of projects which enable waste management to producers and managers



● ASEGRE ORGANS

GENERAL ASSEMBLY

This is the supreme member of the association who has absolute power excepting all statutory functions claimed to the Management Committee and those which could be subject to a special delegation.

Presently the assembly is composed of 75 representatives specifically designated of each member.

MANAGEMENT COMMITTEE

The Management Committee is the managing member of the Association. It is composed by the President, the Vicepresident, the General Secretary and 5 executives elected directly by the assembly, and manages the government, management, administration and representation of the association.

PRESIDENT

The duties of the president are to announce and formulate the agenda and preside the meetings of the General Assembly and the Management Committee, lead the discussions and authorize the minutes. It is also the responsibility of the president to make sure that the members receive all information in time, to encourage an active participation and commitment of their duties as well as to represent the association in all aspects.



- In Spain there are around 2,5 millions of tons of hazardous waste from around 70% are managed by members of **ASEGRE**



The members of **ASEGRE** have a reception capacity of 5 millions tons of waste.

ADALMO
ADIEGO HNOS, S.A.
AFESA Medio Ambiente
A.G.R. S.A.
AMBAR ECO
BEFESA ESCORIAS SALINAS, S.L.
CA NA NEGRETA, S.A.
CATOR, S.A.
CEMENTOS COSMOS
CETRANSA, S.A.
DSM SOLUCIONES MEDIOAMBIENTALES
DISTILLER, S.A.
ECOACTIVA DE MEDIO AMBIENTE, S.A.
ECOIRUÑA TRATAMIENTO DE RESIDUOS, S.L.
ELECTRORECYCLING, S.A.
EMGRISA
FCC ámbito, S.A.
FERROVIAL SERVICIOS, S.A.
FONDOMOVIL, S.L
GAMASUR (Los Barrios)
GECORSA
GEOCYCLE
GESTIÓN INTEGRAL DE ENVASES, S.A.
GVC, S.L.
HOLCIM, S.A.

HERBUSA, S.A.U.
IBERTREDI MEDIOAMBIENTAL
INDUMETAL RECYCLING, SA.
INDURAEES, S.L.
METALLO SPAIN, S.L.U.
PMA. Protección Medio Ambiental, S.L.
RECASA. Recuperaciones Ecológicas Castellanas, S.A.
RECYBERICA AMBIENTAL
RECYPILAS, S.A.
REQUIMSA
RESIDUOS INDUSTRIALES DE ZARAGOZA, S.A.
RIMACOR, S.A.
RYMOIL S.A.
SAFETY KLEEN ESPAÑA, S.A.
SARPI CONSTANTÍ, S.L.U.
SERTEGO; Servicios Medioambientales, S.L.U.
SOLOGAS
SOGECAR
SUEZ IWS-SITA SPE IBÉRICA, S.L.U.
TRADEBE
TRISA. Tratamientos y Recuperaciones Industriales, S.A.
URBAMAR RESIDUOS INDUSTRIALES, S.L.
UTE PMA CONTECO I SOGARISA
VALLS QUÍMICA, S.A.
VERINSUR, S.A.





c/ Orense, 25 – 3ºB
28020-Madrid
Tel. +34 91 556 35 60

www.asegre.com

E-mail: secretaria@asegre.com



De residuo a recurso
con gestión segura